

## A SHOP THAT SOLD EVERYTHING – Including the Kitchen Sink!

More than 20 years ago, in February 1999, a lady called Joan Woodland (née Facer) wrote a short unillustrated article for this magazine about Facer's hardware shop in Quorn, which was situated at what was formerly 8 Station Road, previously known as 'The Hall on the Green'. It stood where the row of 1960s shops are today and was owned by Joan's grandfather, Frank Facer until the 1940s.

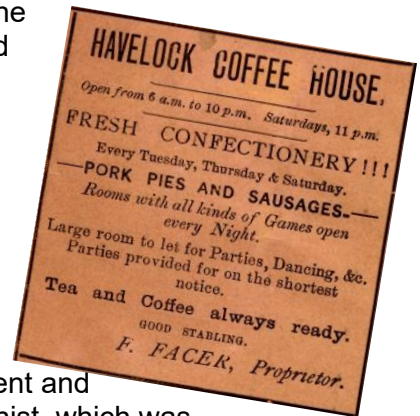
Last summer (2022) Joan's daughter-in-law, Gill Woodland, contacted Sue Templeman from Quorn Village On-line Museum with the original item and additional family information. Below is a new illustrated article, with extracts from Joan's original.

### The Facer Family

The Facers were a well-known family in Quorn, from when Henry Facer, a carpenter born in Leicester, and his young wife Ann, settled with their baby son in a small cottage on Leicester Road, near the Gas Works, (now The Brinks) in the late 1860s. They had at least eleven children, although the first three died as infants. Most of the boys followed in their father's footsteps and became successful joiners and builders, but Frank, born in 1870 went down a different route.

### Frank Facer's Shop

The late 1890s and early 1900s finds Frank running the Havelock Coffee House, which was where John Dory's fish and chip shop on Station Road is today (2023). He then took over the shop that his father had run as a



newsagent and tobacconist, which was also on Station Road, but nearer to Quorn Cross. Frank sold house furnishings and hardware, but the shop is best described in Joan's words:

*"The shop was an Aladdin's cave filled with all manner of things to keep domestic life running smoothly. There were saucepans, plates, cups, scrubbing brushes, soap, dolly tubs and 'dollies', teapots, jugs, kettles. There were screws (by the dozen) and nails (by the pound), with screwdrivers and hammers to fix them in place. There was tobacco and cigarettes, with cigarette cards to be collected. There were toys – whips and tops, bats and balls and lead soldiers and farm*



Frank Facers shop (left), situated at what was formerly 8 Station Road, previously known as 'The Hall on the Green'. On the right is the former Co-Op and a private residence, the buildings of which are now part of Bradley's supermarket.

*animals (made by Britains). And there were bicycles, Raleigh bicycles. Which explains why Frank Facer used the ground floor of the Hall on the Green as a furniture store and bicycle shop."*

### Older History

Facer's shop or the 'Hall on the Green' had once been owned by the Quorn Hall branch of the Farnham family and was thought to be the oldest



building in Quorn after the Church. It dated back to the 15<sup>th</sup> century and was of a cruck construction. In the 1880s, prior to the Facers moving in, it was used as a convent.

Joan tells us how Frank developed his business:

*"Little by little, Frank Facer bought up the property adjacent to the shop, eventually owning the whole block between the two gateways from Station Road to the churchyard."*

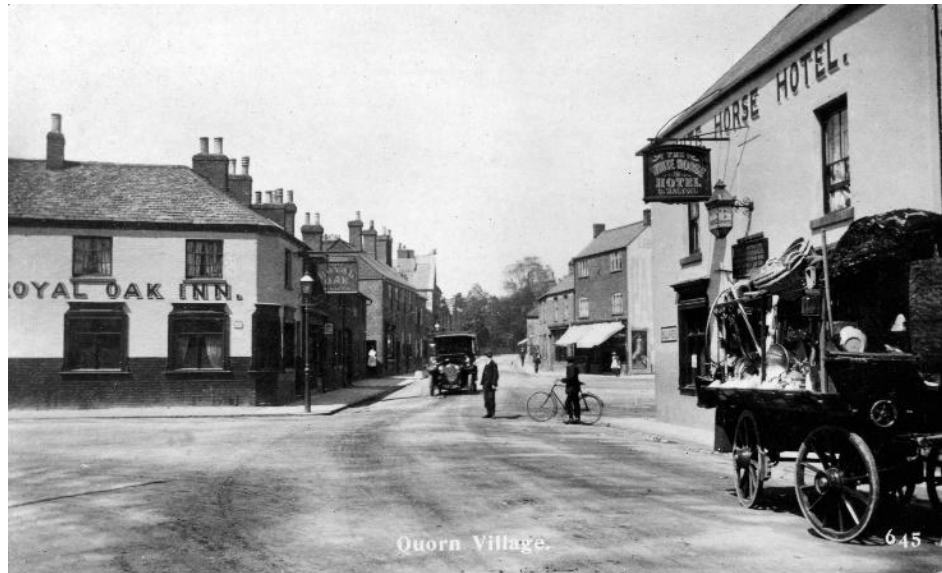
Note that 'the two gateways' refers to the path/drive next to (what is now) Bradley's and the dentist; and the Wedding Path, next to the thatched restaurant, 'The Monk'.

### A Mobile Shop

But not content with just his Station Road premises, Frank Facer introduced an early mobile shop.

Again Joan's words say it all:

*"There was the dray, fitted with shelves stocking as many things from the shop as it could hold, to take the shop to Barrow and Sileby, to Mountsorrel and to Woodhouse Eaves. It was a prototype mobile shop, pulled by Bill the dray horse, who knew exactly where to go and when to stop."*



Frank Facers 'mobile shop' outside the White Horse in the early 1900s



Frank Facer on his penny farthing, thought to have been taken behind the shop on Station Road

### Bicycle Champion

A man of many talents, in the 1880s and 1890s Frank was a keen cyclist on his penny farthing bike and won many races and awards. As a child Joan saw the bike hanging in an outhouse and assumed that everyone's grandfather had a penny-farthing hanging on the wall! He donated the bike to Leicester Museum Service in the mid 1930s.

### Frank's Wife

Right is Frank's wife, Mary Ellen Facer, nee Humprey. She died in 1952, 8 years after Frank.



### 1940s

Frank continued to run the shop until he died in 1944 and all his property was auctioned by Gartons of Loughborough.

Joan left Quorn when she married in 1948 and rarely visited the village after her father died in 1961. During the 1960s, despite many protests, the old 'Hall on the Green' was demolished.

### Family cousins in Quorn

Judging by the shape of the windows, this photograph is believed to have been taken at 'The Hall on the Green'.

Left to Right:

Back row – Laurie [Lawrence] Facer,  
[Frank] Roy Facer.

Front row - cousins- Lucy Facer, Percy  
Facer, Harry Facer

This article was produced by Sue Templeman on behalf of Quorn Village On-line Museum ([www.quornmuseum.com](http://www.quornmuseum.com)), with thanks to Gill Woodland and her late mother in law Joan Woodland, who passed away in late 2024.

